



BETTEUPSTAND

An upturned bath edge which replaces silicone at the wall tiles. For durable hygiene in the bath.

BETTE

BETTEUPSTAND

While designers keep developing new and more elegant models for baths, the edge to the backsplash stays the same – a silicone joint. **BETTEUPSTAND** changes all this.



The **BETTEUPSTAND** is a 35 mm high, enamelled upturn of the tray or bath edge, of which 12 mm is tiled over during installation.

Hygienic, safe, maintenance-free



With **BETTEUPSTAND** we provide a hygienic, durable and most importantly, visually appealing solution. The **BETTEUPSTAND** allows **BETTEBATHS** and **SHOWER TRAYS** to extend under the backsplash and makes the use of silicone in the wall edge unnecessary. Genuine added value that sustainably combines outstanding design with first-rate functionality.



“THE USE OF **BETTEUPSTAND** MAKES A GOOD CONTRIBUTION TO A PROJECT THAT IS GEARED TO SUSTAINABILITY AND LONGEVITY.”

Dipl.-Ing. Neil Winstanley (right), spine architects, Hamburg

BETTEUPSTAND in action

Living and working in the HarbourCity

A rather special development has just been completed in Hamburg’s HarbourCity. Called “Nidus”, it is both a residential building and a place to work. Nidus means nest in Latin – and that is exactly what it will be for future occupants. A nest that provides them with a place to live and with a creative working environment, close to the future HarbourCity University and the designer port.

The project was planned by a private joint building venture, which set itself the target of creating a place that unites generations and cultures and adapts to the different needs of its residents. The layout of the units is open plan and a flexible approach has been adopted to furnishing. So time- related and social changes, such as advancing age, are already taken into consideration in the ground plan.

Sustainability criteria were particularly important in the choice of materials and the apartments and commercial units were finished in a high, energetic, interior design. The construction is inspired by New York loft architecture and complies with the “gold Ecolabel” guidelines of Hafencity GmbH.

The **BETTEBATHS** and **SHOWER TRAYS** installed in the building were all fitted with **BETTEUPSTAND**. Because there is no silicone joint, this helps to avoid follow-up costs and increases the sustainability and eco-friendliness of the project.

SILICONE JOINTS IN THE TILED WALL AREA

- are real dirt traps
- are a good breeding ground for germs and bacteria
- are difficult to clean
- are a possible target for mould
- porous joints cause water damage
- repairs are troublesome and expensive

BATHS OR SHOWER TRAYS WITH **BETTEUPSTAND**

- its glass-like finish does not let bacteria take hold
- is sturdy and easy to clean
- stays permanently clean and hygienic
- provides safe protection against water penetration
- saves troublesome maintenance work

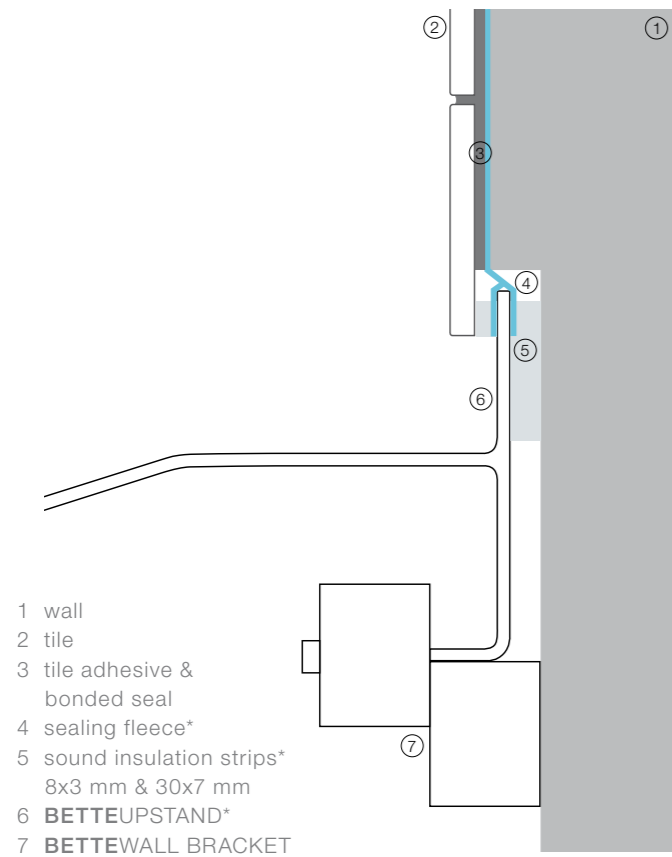


30-year master craftsman’s warranty: On installation by a qualified plumbing company, we offer a 30-year guarantee in accordance with the guarantee certificate.

visualisation of the Shanghaiallee facade



BETTEUPSTAND in detail



- 1 wall
- 2 tile
- 3 tile adhesive & bonded seal
- 4 sealing fleece*
- 5 sound insulation strips*
8x3 mm & 30x7 mm
- 6 **BETTEUPSTAND***
- 7 **BETTEWALL BRACKET**

* included in scope of delivery

COMBINABLE WITH:

- **BETTEBATHS**
- **BETTEShower TRAYS**
- **BETTEFLOOR SIDE** shower area

VARIANTS

- Wall installation:
Standard **BETTEUPSTAND**
- Niche/Corner installation:
Shortened **BETTEUPSTAND**
- Unusual room geometries:
BETTEUPSTAND made to measure

INSTALLATION SYSTEMS:

- For shower trays and **BETTEFLOOR SIDE**:
BETTEINSTALLATION SYSTEM UNIVERSAL BASIC
BETTEFOOT-SYSTEM
- For shower trays, **BETTEFLOOR SIDE** and baths:
BETTEWALL BRACKET

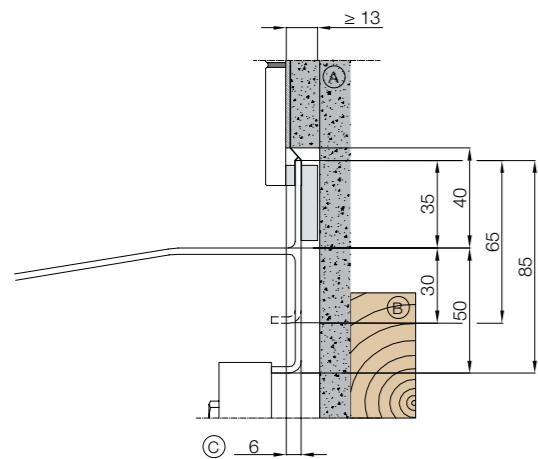
Planning with **BETTEUPSTAND**



BETTEFLOOR SIDE and **BETTEShower TRAYS** with a side length ≥ 1200 mm, come supplied with a 50 mm high tray edge. The upstand stays the same at 35 mm.

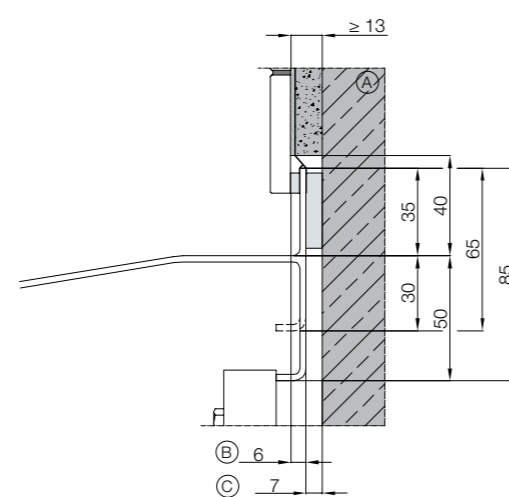
As the shower tray with **BETTEUPSTAND** is let into the wall, the tray installation dimension changes. Please bear this in mind when planning the shower screen. The dimensions specified relate to the rendered rough state, without tiling

Installation lightweight construction



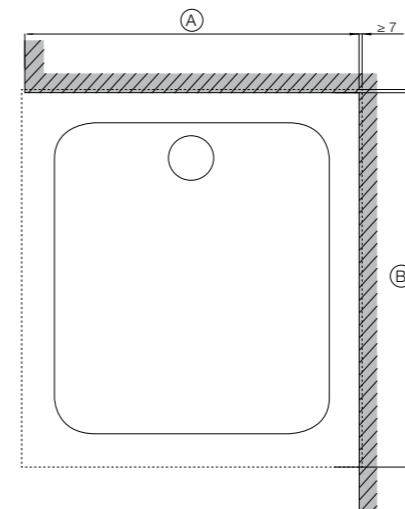
- A Single & double planking 12,5 mm
- B Studding
- C Double planking to outer edge of tray

Installation solid construction



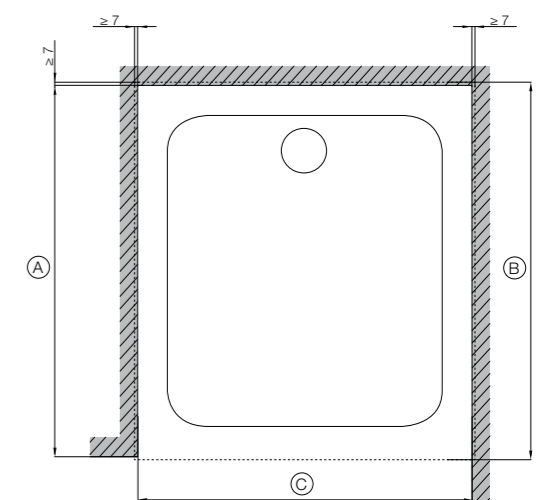
- A Render surface & masonry
- B Rendered masonry to outer edge of tray
- C Outer edge of tray to unrendered masonry

Installation into a corner



- A Tray dimension - (6 mm + Tile thickness front)
- B Tray dimension + 20 mm
- C Tray dimension - 12 mm = Recess dimension rendered masonry

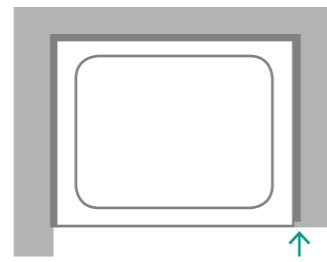
Installation into a niche



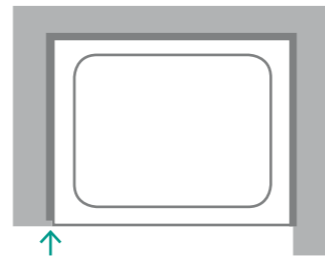
SHORTENED **BETTEUPSTAND**

The **BETTEUPSTAND** can also be specifically adapted for corners where the wall area does not continue. We recommend setting the upstand back by 10 mm. The front can then be neatly tiled over and the clear joint line of the splashback is retained.

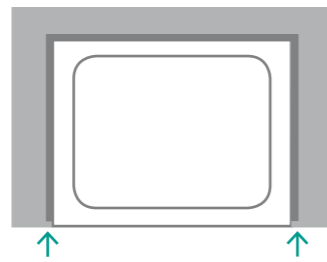
The sides of the baths and shower tray **BETTEUPSTAND** to be shortened will depend on the individual installation situation. Bette will shorten the upstands for one or both sides, on request.



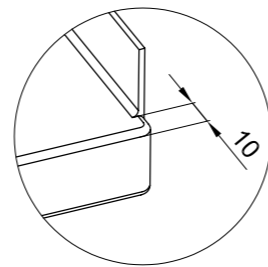
shortened upstand, right (code Y1)



shortened upstand, left (code Y2)



shortened upstand, both sides (code Y3)



The shortened upstand allows optimum adjustment of **BETTEBATHS** and **BETTESHOWER TRAYS** in special installation situations. Every tile must end flush with the foam strip. However, only uncut tiles should be used!

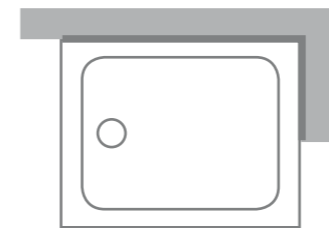


An appropriate recess should be cut in a tile for the bath edge.

BETTEUPSTAND MADE TO MEASURE



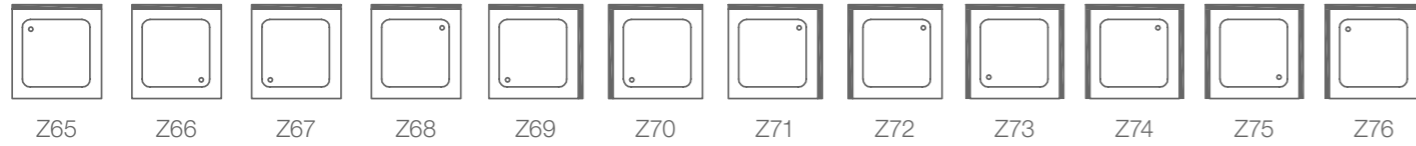
To allow you to enjoy the benefits of **BETTEUPSTAND** even with unusual room geometries or planning projects, we adapt the upstands individually, in accordance with a given drawing. Because of this flexibility, **BETTEUPSTAND** can be integrated into virtually any bathroom architecture.



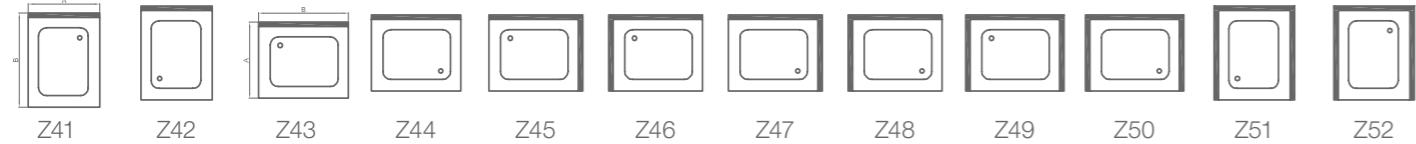
BETTEUPSTAND can also be individually positioned, on request. The baths or shower tray can thus be adapted perfectly to the available space.

Option overview

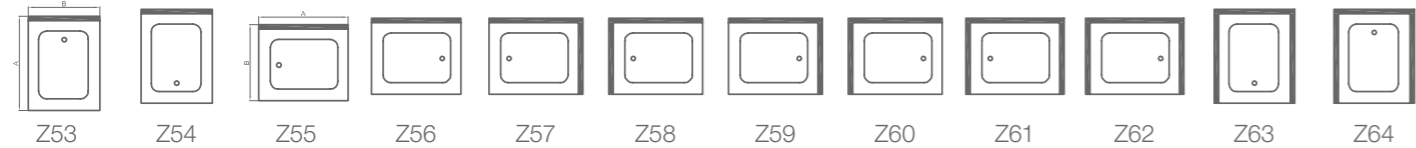
Square shower trays with side dimensions < 1000 mm



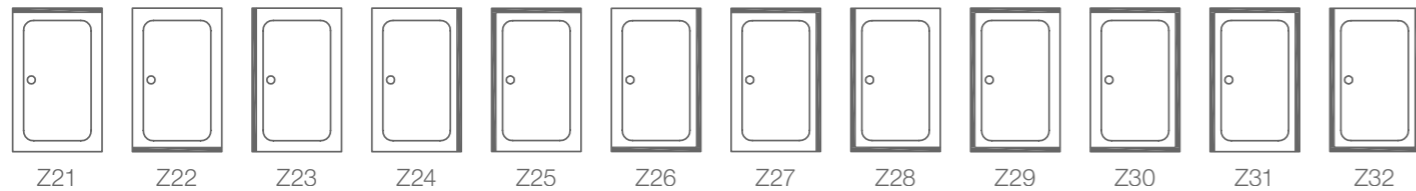
Rectangular shower trays with side dimensions < 1000 mm



Rectangular and square shower trays with a central outlet for side dimensions ≥ 1000 mm < 1600 mm *



Rectangular and square shower trays with a central outlet for side dimensions ≥ 1600 mm *
Shower areas with outlet on the wall side



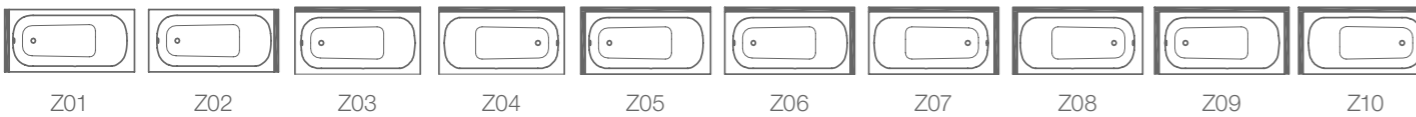
BETTECORNER baths and shower trays



BETTECARO shower trays



Baths with the outlet at the foot end

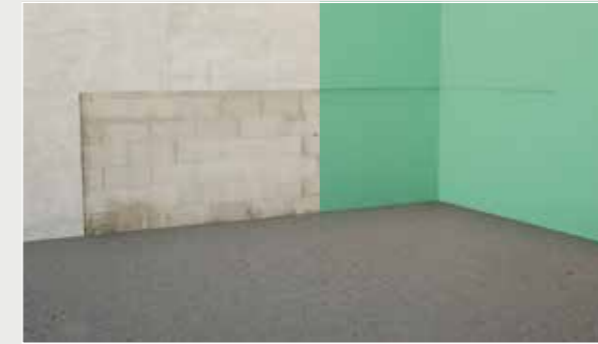


Baths with a central outlet



* **BETTEFLOOR SIDE** and **BETTEShower TRAYS** with a side length ≥ 1200 mm, come supplied with a 50 mm high tray edge. The upstand stays the same at 35 mm.

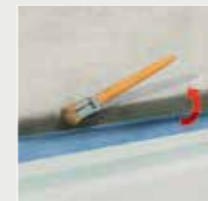
The most important installation steps



The principle is the same for solid and lightweight constructions: The walls are rendered as normal or covered with 2 lightweight boards and the space for the baths and shower trays with **BETTEUPSTAND** is to left accordingly.



On installation, the sound-insulating foam strip on the back of the sealing fleece that was already pre-fitted at the factory, is carefully bonded.



Then the baths and shower trays are aligned as usual and fixed in place with the wall bracket. Then the sealing fleece is bonded to the wall by caulking.



Now all that remains is to bond the front foam strip flush to the bottom edge of the sealing fleece.



The bathroom is then tiled. Make sure that the tiling ends flush with the foam strip, thus tiling over the **BETTEUPSTAND** by 12 mm.

Bette GmbH & Co. KG

Heinrich-Bette-Straße 1
D-33129 Delbrück
Tel.: +49 5250 511-0
Fax: +49 5250 511-130
international@bette.de
www.bette.de

United Kingdom + Ireland:

Bette GmbH & Co. KG UK Branch
Office 2
The Courtyard
Hall Farm
Lockington
Derbyshire
DE74 2SL
Tel.: +44 844 800 0547
Fax: +44 844 800 0548
info@bette.co.uk
www.bette.co.uk

Concept, text:

gambit marketing & communication GmbH, Dortmund
Photography: Studio Casa, Münster

Copyright:

All rights to pictures and brands reserved.

Errors and omissions excepted. Subject to technical changes and updates to ranges / models. For technical reasons to do with the printing process, colour deviations can occur with certain illustrations.